



All images feature actor portrayals.

# Understanding Optune Lua™

---

**The first FDA-approved\* treatment for malignant pleural mesothelioma (MPM) in over 15 years**

Find information about the benefits, side effects, and answers to frequently asked questions about Optune Lua.

Optune Lua in addition to chemotherapy is approved to treat people with unresectable, locally advanced or metastatic, malignant pleural mesothelioma (MPM).

Caution: Federal law restricts this device to sale by or on the order of a physician. Humanitarian Device. Authorized by Federal Law for use in the treatment of adult patients with unresectable, locally advanced or metastatic, malignant pleural mesothelioma concurrently with pemetrexed and platinum-based chemotherapy. The effectiveness of this device for this use has not been demonstrated.

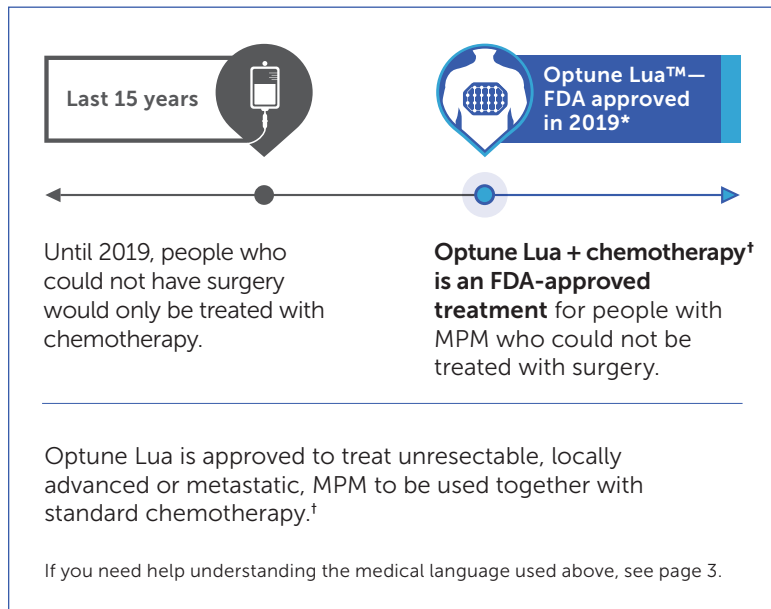
\*FDA approved under the Humanitarian Device Exemption pathway.

**Please see pages 10 and 11 for  
full Important Safety Information.**



# How is malignant pleural mesothelioma (MPM) treated?

Until recently, treatment for MPM had been limited



Optune Lua is used together with chemotherapy<sup>†</sup>



Optune Lua



Standard chemotherapy

Optune Lua is not a medicine and does not enter the bloodstream. When used with chemotherapy, the most common device-related side effect was skin irritation.

\*FDA approved under the Humanitarian Device Exemption pathway.

<sup>†</sup>Pemetrexed and platinum-based chemotherapy.

Please see pages 10 and 11 for full Important Safety Information.

# Explore Optune Lua

Optune Lua is designed with you in mind



Small, light, and weighs just 2.7 pounds.



Optune Lua weighs less than most laptop computers.

Easy-access sleeve bag

Electric field generator (with battery)

Transducer arrays



Sometimes medical language is hard to understand. The following may help:

**Unresectable** means that a tumor is not able to be removed with surgery.

**Locally advanced** means that tumors have spread into nearby tissues, organs, or lymph nodes in the areas around where the cancer originally formed.

**Metastatic** means the cancer has spread from where the cancer originally formed to other tissues or organs in the body.

**Malignant pleural mesothelioma (MPM)** is a type of cancer that affects the lining of the lungs. It is malignant, which means abnormal cells divide without control and spread to nearby cells.

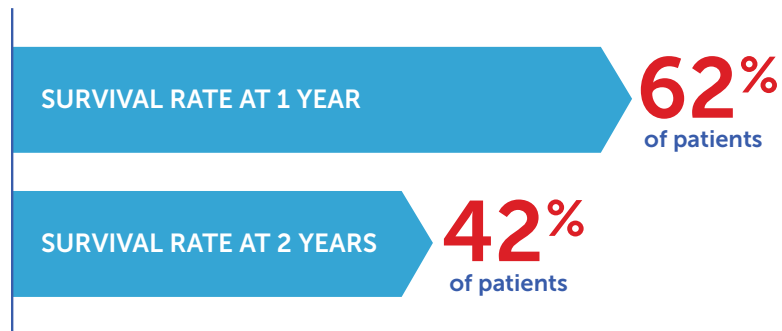
## Selected Important Safety Information

Optune Lua is not for everyone. Talk to your doctor if you have:

- An implanted electronic medical device including a pacemaker, implantable automatic defibrillator, etc.

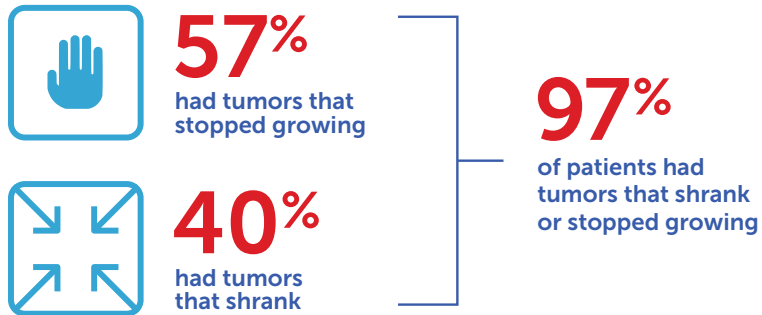
## Optune Lua™ might help you live longer

A recent clinical study\* showed that using Optune Lua + chemotherapy provided:



\*In a clinical study, Optune Lua was used with chemotherapy (pemetrexed and platinum-based chemotherapy) in 80 untreated patients with unresectable (unable to be removed via surgery) MPM.

Most people who used Optune Lua + chemotherapy† saw their MPM shrink or stop growing:



†In a study where 72 patients had at least 1 follow-up CT scan performed.

Please see pages 10 and 11 for full Important Safety Information.

## Does Optune Lua cause side effects?

- Optune Lua is not a medicine and does not enter the bloodstream
- In the clinical study, the only side effect related to Optune Lua use was skin irritation seen in 71% of people (66% mild-to-moderate and 5% severe)
  - Most skin irritation is reversible and can be treated with topical ointments, creams, or solutions prescribed by your doctor



### Selected Important Safety Information

Most common side effects of Optune Lua when used together with chemotherapy were low red blood cell count, constipation, nausea, tiredness, chest pain, fatigue, skin irritation from device use, itchy skin, and cough.

# How Optune Lua™ works

## Optune Lua works by creating Tumor Treating Fields (TTFields), which are electric fields that disrupt cancer cell division

Using 4 adhesive patches called arrays, TTFields therapy is delivered right into the area of your body where the cancer is located. TTFields may destroy some cancer cells completely and have not been shown to affect healthy cells.

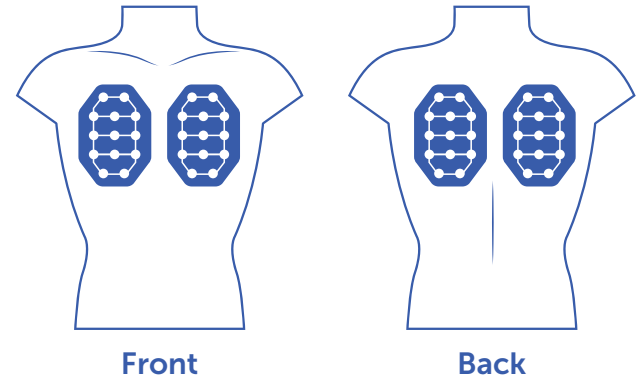


### Selected Important Safety Information

Optune Lua should only be used after receiving training from qualified personnel, such as your doctor, a nurse, or other medical staff who have completed a training course given by Novocure®, the maker of Optune Lua.

Please see pages 10 and 11 for full Important Safety Information.

### Sample placement of arrays



Where you put the arrays on your body matters. Each person's body is a different shape and size and may have cancer cells in different locations. You (and your caregiver) will receive training to show you how and where to place the arrays on your upper body.

Note: Your array placement may vary. This may include the placement of arrays on your sides.\*

- A Skin Care Guidelines brochure is available with more details about how to take care of your skin and place arrays on your body



Download the Skin Care Guidelines brochure at [OptuneLua.com/skincare](https://OptuneLua.com/skincare)

\*An Array Applicator will be provided to help place arrays onto your skin. Using the Array Applicator is optional.

## Frequently asked questions



### Can I wear my Optune Lua™ while I'm sleeping?

Yes. You can set the device on the nightstand next to your bed.



### What will I feel when using Optune Lua?

You may experience a warm feeling or sensation, which is normal.



### Why do I have to shave my upper body while using Optune Lua?

The arrays need to be applied directly to your skin to work properly. Even a small amount of hair growth can prevent the arrays from making good contact with your skin.



### How do I shower or bathe while I use Optune Lua?

There are 2 ways to clean your upper body:

#### A sponge bath with your arrays still on

- Unplug the arrays from Optune Lua
- Cover the unplugged arrays and wires that are still attached to you by placing a towel around your upper body to prevent the arrays from getting wet\*

#### A full shower with your arrays completely removed

- Unplug the arrays from Optune Lua
- Take a normal shower once your arrays have been completely removed from your body\*

\*Leave Optune Lua outside the bathroom while taking a sponge bath or a full shower.

Please see pages 10 and 11 for full Important Safety Information.



### What should I do if my arrays get wet?

Getting the arrays wet can cause them to come loose and interfere with contact to your skin. If this happens, the alarm may sound and the device may turn off. If at any time the arrays become wet or loosen, they should be changed.



### How long should I use Optune Lua?

- You should turn on Optune Lua at least 75% of the time (averaging 18 hours per day), even at night while you are sleeping
  - You can plan ahead for important events (like a wedding) where you do not wish to use the device. This can be done by using Optune Lua for more hours prior to the event
- You can decide which times of the day are best for you to use Optune Lua
- You should not stop treatment with Optune Lua unless you have been instructed to do so by your doctor



### How often do I have to replace my arrays?

You should replace your arrays at least twice per week (every 3-4 days) to help minimize the risk of skin irritation.



For answers to more questions you may have, please visit: [OptuneLua.com/FAQs](https://OptuneLua.com/FAQs)

### Selected Important Safety Information

**Do not use Optune Lua if you are pregnant or are planning to become pregnant.** It is not known if Optune Lua is safe or effective during pregnancy.

# Important Safety Information

## What is Optune Lua™ approved to treat?

Optune Lua is a wearable, portable, FDA-approved device indicated for the treatment of adult patients, with unresectable, locally advanced or metastatic, malignant pleural mesothelioma (MPM) to be used together with standard chemotherapy (pemetrexed and platinum-based chemotherapy).

## Who should not use Optune Lua?

Optune Lua is not for everyone. Talk to your doctor if you have:

- **An implanted electronic medical device including a pacemaker, implantable automatic defibrillator, etc.** Optune Lua has not been tested in people with implanted electronic devices, which may cause the devices not to work properly
- **A known sensitivity to conductive hydrogels** (the gel on the arrays placed on the upper body like the ones used on EKGs). When Optune Lua comes into contact with the skin, it may cause more redness and itching or may rarely cause a life-threatening allergic reaction

**Do not use Optune Lua if you are pregnant or are planning to become pregnant.** It is not known if Optune Lua is safe or effective during pregnancy.

## What should I know before using Optune Lua?

Optune Lua should only be used after receiving training from qualified personnel, such as your doctor, a nurse, or other medical staff who have completed a training course given by Novocure®, the maker of Optune Lua.

- Do not use any parts that did not come with Optune Lua sent to you by Novocure or given to you by your doctor

- Do not get the device or transducer arrays wet
- Please be aware that Optune Lua has a cord that may cause tripping when connected to an electric socket
- If you have an underlying serious skin condition on the upper body, discuss with your doctor whether this may prevent or temporarily interfere with the Optune Lua treatment

## What are the possible side effects of Optune Lua?

Most common side effects of Optune Lua when used together with chemotherapy were low red blood cell count, constipation, nausea, tiredness, chest pain, fatigue, skin irritation from device use, itchy skin, and cough.

Other potential adverse effects associated with the use of Optune Lua include: treatment related skin irritation, allergic reaction to the plaster or to the gel, electrode overheating leading to pain and/or local skin burns, infections at sites of electrode contact with the skin, local warmth and tingling sensation beneath the electrodes, muscle twitching, medical device site reaction and skin breakdown/skin ulcer.

Talk to your doctor if you have any of these side effects or questions.

**Please visit [OptuneLua.com](https://www.optunelua.com) to see the Optune Lua Instructions For Use (IFU) for complete information regarding the device's indications, contraindications, warnings, and precautions.**



## Get support every step of the way with nCompass™

We know that starting Optune Lua™ doesn't just impact how you treat MPM. It can impact your entire way of life, and that can be a lot to deal with—that's where nCompass comes in. Our support team is here to help you adjust to life with Optune Lua, and we're available 24/7.



### nCompass can\*:

- Provide information on Optune Lua and how it works
- Answer questions about how Optune Lua may help treat your MPM
- Work with your insurance plan and identify resources that may help minimize your cost
- Provide tips and resources on how to make Optune Lua a part of your daily life
- Set up delivery of Optune Lua and provide training to you and your caregivers
- Set up additional Optune Lua training at any time if you need it
- Reorder supplies, such as arrays or extra batteries
- Provide support and answer questions 24/7

\*nCompass and Novocure® cannot provide medical advice. Consult with your doctor for medical-related questions.



Call us:  
**1-855-281-9301** (toll-free)



Or email:  
**support@novocure.com**



Support is available in over 240 languages.

Please visit **OptuneLua.com** to see the Optune Lua Instructions For Use (IFU) for complete information regarding the device's indications, contraindications, warnings, and precautions.

**novocure**®

©2021 Novocure GmbH. All rights reserved.  
Optune Lua, nCompass, and Novocure are trademarks of Novocure GmbH. US-OPT-03333v4.0 April 2021

**OPTUNE**  
LUA™