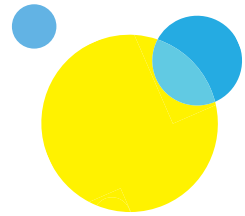


# COMMON TREATMENTS FOR MESOTHELIOMA



If you've been diagnosed with malignant pleural mesothelioma (MPM), it's good to know you may have choices in your treatment. Not all cases of mesothelioma are the same, so treatment options that may be right for you may not be right for someone else. Here is an overview of different treatments that may be able to help you fight back against MPM:



## SURGERY MAY BE AN OPTION FOR "RESECTABLE" CANCER

If your tumor can be removed by surgery, that means your cancer is **resectable**.

- **Your doctor will determine if surgery is right for you.** Not all cases of MPM can be treated with surgery
- Types of surgery for MPM include:
  - **Pleurectomy/decortication (P/D)**, which removes the tumor and affected pleura tissue
  - **Extrapleural pneumonectomy (EPP)**, which removes an entire lung and the surrounding tissue
- Surgery may be **used prior to or combined with other treatments**
- Surgery may be performed by a **thoracic surgeon**—a doctor who treats diseases of the lungs and chest using surgery



## YOUR DOCTOR MAY CONSIDER RADIATION

Radiation therapy **uses beams of energy to attack cancer cells**. Your doctor will decide if radiation therapy is an option for you.

- **Radiation may be used after surgery** to help kill any cancer cells that were missed
- MPM isn't usually one central tumor, so it can be difficult to target with radiation
- Radiation may be **used to control or ease symptoms**
- Given by a **radiation oncologist**—a doctor who treats cancer with radiation



## CHEMOTHERAPY IS A COMMON TREATMENT FOR MPM

Chemotherapy is a treatment that uses **anticancer drugs** that may **slow or stop tumor cells from growing and multiplying**.

- Common chemotherapies for MPM include **pemetrexed** and **cisplatin** or **carboplatin**
- Chemotherapy may be used as the **main treatment for unresectable cancer**. This means the cancer cannot be removed by surgery
- Chemotherapy **may also be used before or after surgery**. This is done to shrink tumors before surgery or to kill any cancer cells that were missed during surgery
- Commonly planned by a **medical oncologist**—a doctor who treats cancer with medicines including chemotherapy or a **thoracic oncologist**—a cancer doctor who specializes in the lungs



## A MEDICAL DEVICE FOR MPM

Along with chemotherapy, a medical device can also be used to treat MPM.

- **TTFields** (Tumor Treating Fields) are low-intensity electric fields delivered by a **wearable, portable** device
- These electric fields can help **stop cancer cells from growing and spreading**
- People whose MPM can't be treated with surgery, has advanced locally, or has spread, may use TTFields along with chemotherapy
- Treatment can be managed by your **radiation oncologist, medical or thoracic oncologist, or thoracic surgeon**

See the back for additional treatment choices.

# COMMON TREATMENTS FOR MESOTHELIOMA (cont'd)



## TARGETED THERAPY COULD BE ADDED TO CHEMOTHERAPY

In addition to chemotherapy, your doctor may recommend targeted therapy.

- Targeted therapies focus on some of the changes that make **cancer cells different from normal cells**
- The therapy **bevacizumab targets a protein** found in MPM that **helps tumors form new blood vessels**
- Can help “**starve**” the tumor by preventing **blood and nutrients from reaching the cancer cells**
- Commonly planned by a **medical oncologist** or a **thoracic oncologist**



## IMMUNOTHERAPY IS ANOTHER OPTION

For people whose MPM can't be treated with surgery, immunotherapy offers another option.

- Immunotherapy is a drug or a combination of drugs that **helps your body's own immune system to find and fight cancer cells**
- Examples of immunotherapies include **nivolumab** and **ipilimumab**, which are used together as a combination therapy
- Commonly planned by a **medical oncologist** or a **thoracic oncologist**

# CLINICAL TRIALS



## GETTING INVOLVED WITH TREATMENT RESEARCH

Researchers are working to find a cure for MPM. Clinical trials are often considered when the standard (approved) treatment options have failed. Clinical trials can also be used to investigate front-line treatment options in newly diagnosed patients. In clinical trials, researchers look at how different treatments work to fight MPM. They also pay close attention to side effects. Talk to your doctor about the pros and cons of a clinical trial before considering one.

All images feature actor portrayals.

**Your healthcare team should be the first source for information and advice when it comes to your disease and treatment choices. Please contact your doctor if you have any questions or need more information.**

## Notes

---

---

---

---