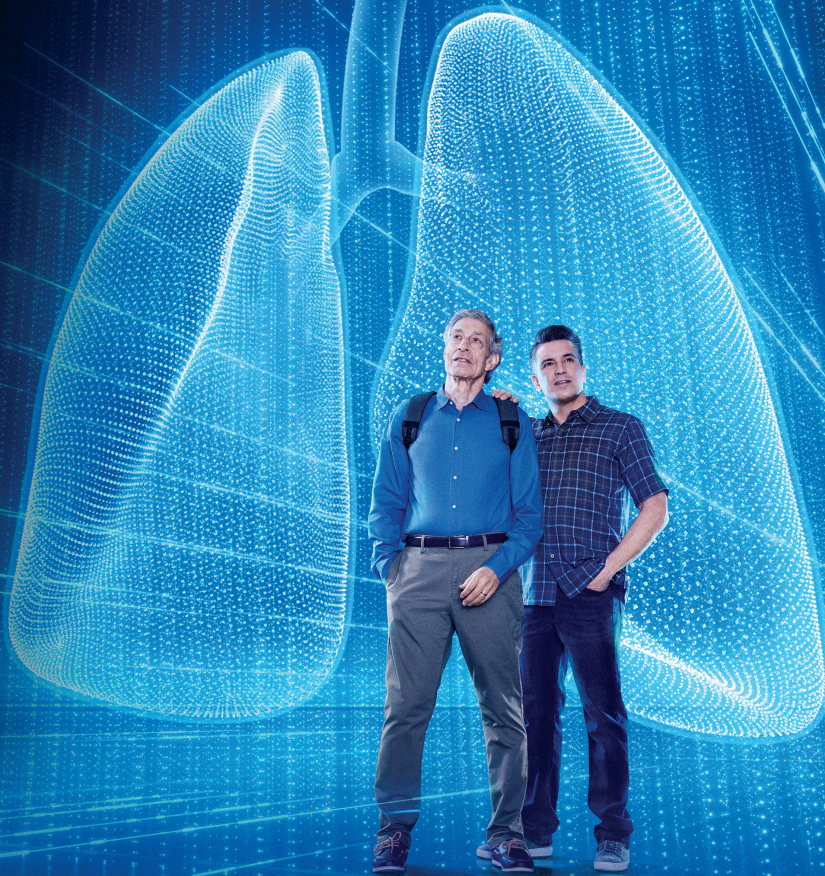


Optune Lua™—For unresectable, locally advanced or metastatic, MALIGNANT PLEURAL MESOTHELIOMA (MPM)¹

A brief introduction to Optune Lua for you and your patients



Caution: Federal law restricts this device to sale by or on the order of a physician. Humanitarian Device. Authorized by Federal Law for use in the treatment of adult patients with unresectable, locally advanced or metastatic, malignant pleural mesothelioma concurrently with pemetrexed and platinum-based chemotherapy. The effectiveness of this device for this use has not been demonstrated.

Selected Important Safety Information

The most common ($\geq 10\%$) adverse events involving Optune Lua in combination with chemotherapy were anemia, constipation, nausea, asthenia, chest pain, fatigue, medical device site reaction, pruritus, and cough.

Please see the complete Important Safety Information for Optune Lua on the back cover and the accompanying Optune Lua Instructions For Use (IFU) for complete information regarding the device's indications, contraindications, warnings, and precautions.

 **OPTUNE**
LUA™

Optune Lua™ is wearable and portable. Designed with you in mind^{1,2}

Small, light, and weighs just 2.7 pounds. That's less than the weight of most laptop computers



Novocure designed the Optune Lua system for carrying comfort and usability^{1,2}



Optune Lua works by creating Tumor Treating Fields (TTFields), which are delivered right into the area of your body with cancer

You may be wondering what TTFields are and how they can treat mesothelioma. Here are a couple of facts:

- TTFields are low-intensity, wave-like electric fields¹
 - These invisible electric fields are not strong enough to hurt you or your healthy cells, but they are strong enough to slow or stop cancer cells from dividing (splitting apart)
 - When a cancer cell divides, it creates even more cancer cells
- TTFields may destroy some cancer cells completely^{3,4}

Selected Important Safety Information

Do not use Optune Lua in patients with implantable electronic medical devices such as pacemakers or implantable automatic defibrillators, etc. Use of Optune Lua together with implanted electronic devices has not been tested and may lead to malfunctioning of the implanted device.

Please see the complete Important Safety Information for Optune Lua on the back cover and the accompanying Optune Lua Instructions For Use (IFU) for complete information regarding the device's indications, contraindications, warnings, and precautions.

FOR PATIENTS

An introduction to Optune Lua™

Optune Lua may be new to you. Here are a few answers that helped other patients with mesothelioma and their caregivers decide if Optune Lua was right for them.



What is Optune Lua?

Optune Lua is a **wearable and portable FDA-approved treatment** for mesothelioma* that is used with chemotherapy.

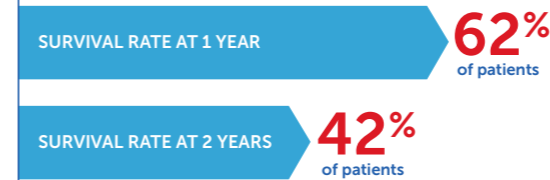


How can Optune Lua fit into your daily life?

You can get **continuous treatment almost anywhere**. You can go about your daily routine at work, while traveling, and at social functions if your doctor agrees.

How might Optune Lua help you live longer?

A clinical study showed that using Optune Lua + chemotherapy provided*



How long should you use Optune Lua?

You should turn on Optune Lua at least 75% of the time (averaging 18 hours a day), even at night while you are sleeping.

*In a clinical study, Optune Lua was used with chemotherapy in 80 untreated patients with unresectable (unable to be removed via surgery) malignant pleural mesothelioma.



Does Optune Lua cause side effects?

In a clinical study, the only side effect related to Optune Lua use was skin irritation seen in 71% of people (66% mild-to-moderate and 5% severe). No serious side effects were related to the use of Optune Lua.

Contact nCompass™ for all support needs



Call us:
1-855-281-9301 (toll-free)



Or email:
support@novocure.com

To learn more, visit
OptuneLua.com

Please see the complete Important Safety Information for Optune Lua on the back of this page.



What is Optune Lua™ approved to treat?

Optune Lua is a wearable, portable, FDA-approved device indicated for the treatment of adult patients, with unresectable, locally advanced or metastatic, malignant pleural mesothelioma (MPM) to be used together with standard chemotherapy (pemetrexed and platinum-based chemotherapy).

Who should not use Optune Lua?

Optune Lua is not for everyone. Talk to your doctor if you have:

- **An implanted electronic medical device including a pacemaker, implantable automatic defibrillator, etc.** Optune Lua has not been tested in people with implanted electronic devices, which may cause the devices not to work properly
- **A known sensitivity to conductive hydrogels** (the gel on the arrays placed on the upper body like the ones used on EKGs). When Optune Lua comes into contact with the skin, it may cause more redness and itching or may rarely cause a life-threatening allergic reaction

Do not use Optune Lua if you are pregnant or are planning to become pregnant. It is not known if Optune Lua is safe or effective during pregnancy.

What should I know before using Optune Lua?

Optune Lua should only be used after receiving training from qualified personnel, such as your doctor, a nurse, or other medical staff who have completed a training course given by Novocure®, the maker of Optune Lua.

- Do not use any parts that did not come with Optune Lua sent to you by Novocure or given to you by your doctor
- Do not get the device or transducer arrays wet
- Please be aware that Optune Lua has a cord that may cause tripping when connected to an electric socket
- If you have an underlying serious skin condition on the upper body, discuss with your doctor whether this may prevent or temporarily interfere with Optune Lua treatment

What are the possible side effects of Optune Lua?

Most common side effects of Optune Lua when used together with chemotherapy were low red blood cell count, constipation, nausea, tiredness, chest pain, fatigue, skin irritation from device use, itchy skin, and cough.

Other potential adverse effects associated with the use of Optune Lua include: treatment related skin irritation, allergic reaction to the plaster or to the gel, electrode overheating leading to pain and/or local skin burns, infections at sites of electrode contact with the skin, local warmth and tingling sensation beneath the electrodes, muscle twitching, medical device site reaction and skin breakdown/skin ulcer.

Talk to your doctor if you have any of these side effects or questions.

Please visit [OptuneLua.com](https://www.optunelua.com) for Optune Lua Instructions For Use (IFU) for complete information regarding the device's indications, contraindications, warnings, and precautions.

References: **1.** FDA Approves the NovoTTF-100L™ System in Combination with Chemotherapy for the Treatment of Malignant Pleural Mesothelioma [press release]. St. Helier, Jersey: Business Wire; May 23, 2019. **2.** Optune Lua. Instructions for Use for Unresectable Malignant Pleural Mesothelioma. Novocure; 2019. **3.** Optune Lua. Patient Information and Operation Manual for Unresectable Malignant Pleural Mesothelioma. Novocure; 2019. **4.** Ceresoli GL, Aerts JG, Dziadziuszko R, et al. Tumour Treating Fields in combination with pemetrexed and cisplatin or carboplatin as first-line treatment for unresectable malignant pleural mesothelioma (STELLAR): a multicentre, single-arm phase 2 trial. *Lancet Oncol.* 2019;20(12):1702-1709.

Indications For Use

Optune Lua™ is indicated for the treatment of adult patients with unresectable, locally advanced or metastatic, malignant pleural mesothelioma (MPM) to be used concurrently with pemetrexed and platinum-based chemotherapy.

Important Safety Information

Contraindications

Do not use Optune Lua in patients with implantable electronic medical devices such as pacemakers or implantable automatic defibrillators, etc. Use of Optune Lua together with implanted electronic devices has not been tested and may lead to malfunctioning of the implanted device.

Do not use Optune Lua in patients known to be sensitive to conductive hydrogels. Skin contact with the gel used with Optune Lua may commonly cause increased redness and itching, and may rarely lead to severe allergic reactions such as shock and respiratory failure.

Warnings and Precautions

Optune Lua can only be prescribed by a healthcare provider that has completed the required certification training provided by Novocure®.

The most common ($\geq 10\%$) adverse events involving Optune Lua in combination with chemotherapy were anemia, constipation, nausea, asthenia, chest pain, fatigue, medical device site reaction, pruritus, and cough.

Other potential adverse effects associated with the use of Optune Lua include: treatment related skin toxicity, allergic reaction to the plaster or to the gel, electrode overheating leading to pain and/or local skin burns, infections at sites of electrode contact with the skin, local warmth and tingling sensation beneath the electrodes, muscle twitching, medical device site reaction and skin breakdown/skin ulcer.

If the patient has an underlying serious skin condition on the chest, evaluate whether this may prevent or temporarily interfere with Optune Lua treatment.

Do not prescribe Optune Lua for patients that are pregnant, you think might be pregnant or are trying to get pregnant, as the safety and effectiveness of Optune Lua in these populations have not been established.

Please see the accompanying Optune Lua Instructions For Use (IFU) for complete information regarding the device's indications, contraindications, warnings, and precautions.

References: **1.** Optune Lua. Instructions for Use for Unresectable Malignant Pleural Mesothelioma. Novocure; 2021. **2.** Optune Lua. Patient Information and Operation Manual for Unresectable Malignant Pleural Mesothelioma. Novocure; 2021. **3.** Kirson ED, Gurvich Z, Schneiderman R, et al. Disruption of cancer cell replication by alternating electric fields. *Cancer Res.* 2004;64(9):3288-3295. **4.** Giladi M, Schneiderman RS, Voloshin T, et al. Mitotic spindle disruption by alternating electric fields leads to improper chromosome segregation and mitotic catastrophe in cancer cells. *Scientific Reports.* 2015;5(1):1-16.

novocure®

©2020 Novocure. All rights reserved. Optune Lua, nCompass, and Novocure are trademarks of Novocure.
US-OPT-03755v2.0 August 2020

 **OPTUNE**
— LUA™